

**Advanced Block
Corporation**

**Building a better world,
one block at a time.**

Building The Shell: Specialized Interlocking Block and Dry Stack Masonry

Recognizing the need for more housing at a greater rate than what is currently being produced in the US and around the world we felt that we needed to do something about this. Being presented with an opportunity using Accelerated Building Systems' (ABS) patent pending interlocking block technology we saw that this could be achieved.

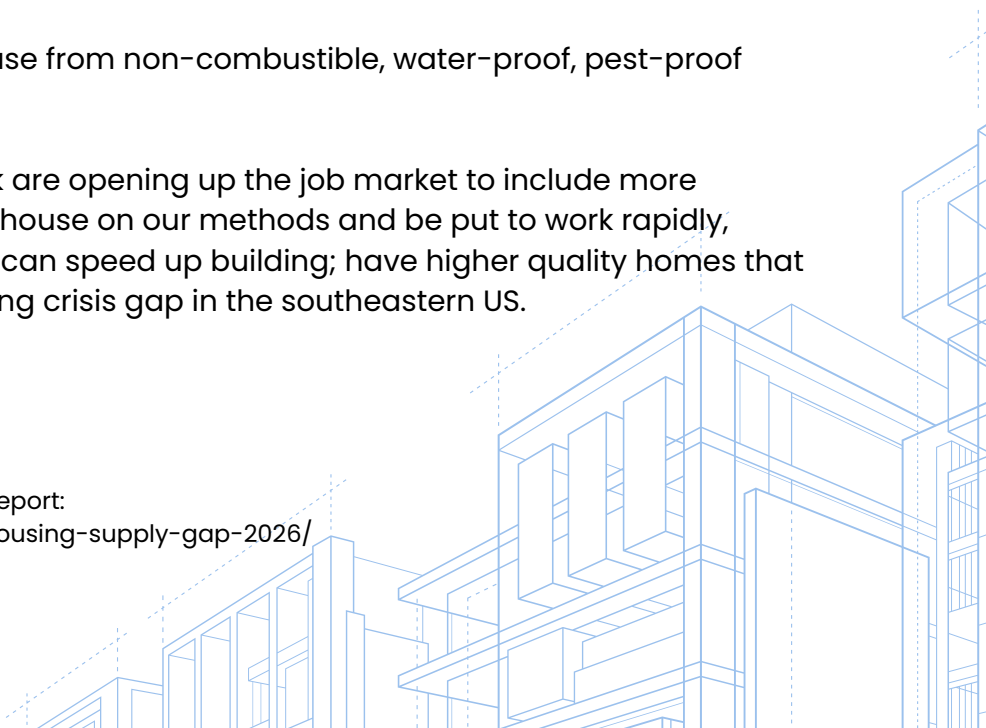
Providing a combined 40 plus years of experience in the masonry/construction industry, we recognized the need to streamline and revolutionize the speed at which we build and with this new technology, we are doing just that. In recent reports on the current need in the US, we are in a housing crisis. The latest data shows the national housing supply gap has reached over 4 million homes. Here in the Southeast, strong population growth as people move into the region from across the country is driving even greater demand.

Our methods are reviving this dying art of "dry stack" masonry and revolutionizing the way homes are built. Concrete homes offer a higher lifespan standing up against the elements homes are exposed to here in the Southeast. Traditional frame housing is susceptible to a number of challenges, including:

- significant shortage of skilled trades
- combustible materials add to fire risks
- black mould formation in the insulation of the hollow walls which can be a very substantial health hazard and very costly to remediate
- hollow walls are subject to pest infestation like termites and damage to the structural integrity of the home

It just makes sense to build a house from non-combustible, water-proof, pest-proof materials.

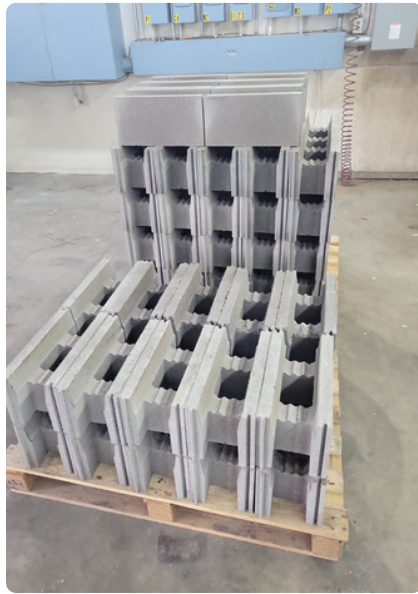
Our methods and precision block are opening up the job market to include more labourers who can be trained in-house on our methods and be put to work rapidly, overseen by a skilled mason. We can speed up building; have higher quality homes that will last; and help close the housing crisis gap in the southeastern US.



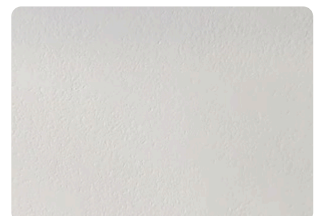
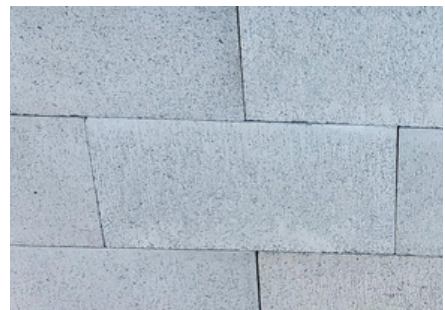
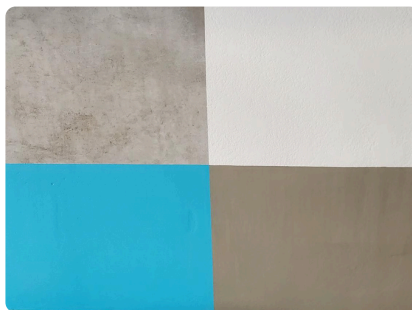
Our Product

Our dry cast, precision-built, interlocking block design allows each block to be stacked on top of each other directly, much faster and with less strain compared with traditional mortared masonry.

We manufacture all of our own blocks in our manufacturing facilities, providing better control of supply and quality, and allowing us the ability to pass on the productivity savings to our customers.



Our block is currently available in 8-inch and 12-inch sizes. The specialized grooves inside our block allow us to coordinate with the architects, builders, general contractors, and electrical and plumbing trades to lay conduit and PEX lines for an even faster build time and reduced costs.



Plain surface bonding (grey)

Painted (aqua)

Primed (dark grey)

Textured (dimpled white)

Our Process

We specialize in '**dry stack**' masonry construction, as provided by the International building code, where concrete blocks are simply stacked in a 'running bond', and succeeding 'courses' or rows of blocks are stacked on top of each other, resulting in a strong, attractive modular wall.

This allows an extended season, providing an efficient and economical building system with a reduced reliance on skilled trades, which are in short supply.

Each wall is steel reinforced with rebar and either filled with high strength grout or surface bonded and grouted with high-insulated value cellular concrete. In both cases, the structure results in a solid, concrete, steel-reinforced wall.

Surface bonding cement is a specialized cement which typically contains cement, well graded sharp sand, glass fibers, acrylic and epoxy. This is a very strong wall surface that is waterproof on both sides. It can also be 'finished' on both sides with several different patterns and textures depending on the customer's preferences.

Cellular Concrete is an air entrained lightweight concrete, which has very high sound and thermal insulating values, and an exceptional fire-retardant rating. The result is a high strength fully sealed concrete structure that is insulated, fully finished on the interior and exterior, and highly resistant to weathering in the elements. This provides a very tough, low maintenance surfacing to the building.



Above: a sample wall of dry stacked, mortarless blocks; steel reinforced and grouted solid, using our precision interlocking concrete blocks.



Above: a sample wall of dry stacked blocks; steel reinforced; grouted solid and insulated with cellular concrete, using our precision manufactured interlocking concrete blocks and surface-bonded on the exterior of both sides, which can then be textured and painted as desired.



Above: sample walls of dry stacked blocks; steel reinforced and grouted solid, using our precision manufactured interlocking concrete blocks, and dressed with faux stone.

The Major Advantages Are:

Home Owner: stronger structure; lower maintenance; greater aesthetics and design options; pest proof; improved fire protection; improved sound dampening properties; faster occupancy; and lower cost. **BETTER QUALITY AT LOWER COST, WITH FASTER BUILD TIMES.**

General Contractor: reduced reliance on skilled trades; higher productivity; faster construction; lower costs; delivering higher quality to the customer.

Developer: projects completed on-time; on-budget; with reduced costs; and greater speed of construction. Frees up capital, reduces workload, and allows greater opportunities.

Masonry Contractor: higher installation speed; greatly improved block per day count; only one mason per crew needed; heavier lifting by labourers not mason; greater profitability due to increased productivity and efficiency; complete more projects per year with existing masons.

What We Build

Higher Quality Housing at More Affordable Prices: Single family homes; duplexes; multi-family homes; garden suites; accessory dwellings; garages; retaining and dividing walls; foundations; basements; additions; stairwells; garden & planter walls.

Commercial, Industrial & Agricultural Buildings: foundations; entire structures; or infill walls for steel buildings.

Mid to High-Rise residential: foundations; parking lots; stairwells; elevator shafts; demising walls.

Please call us to:



Produce higher quality builds at lower cost



Improved LEEDS credits



Substantially faster build times to lock-in



Reduce reliance on skilled trades



Using local non-combustable materials, 100% recyclable, with improved fire & sound qualities

Advanced Block Corporation



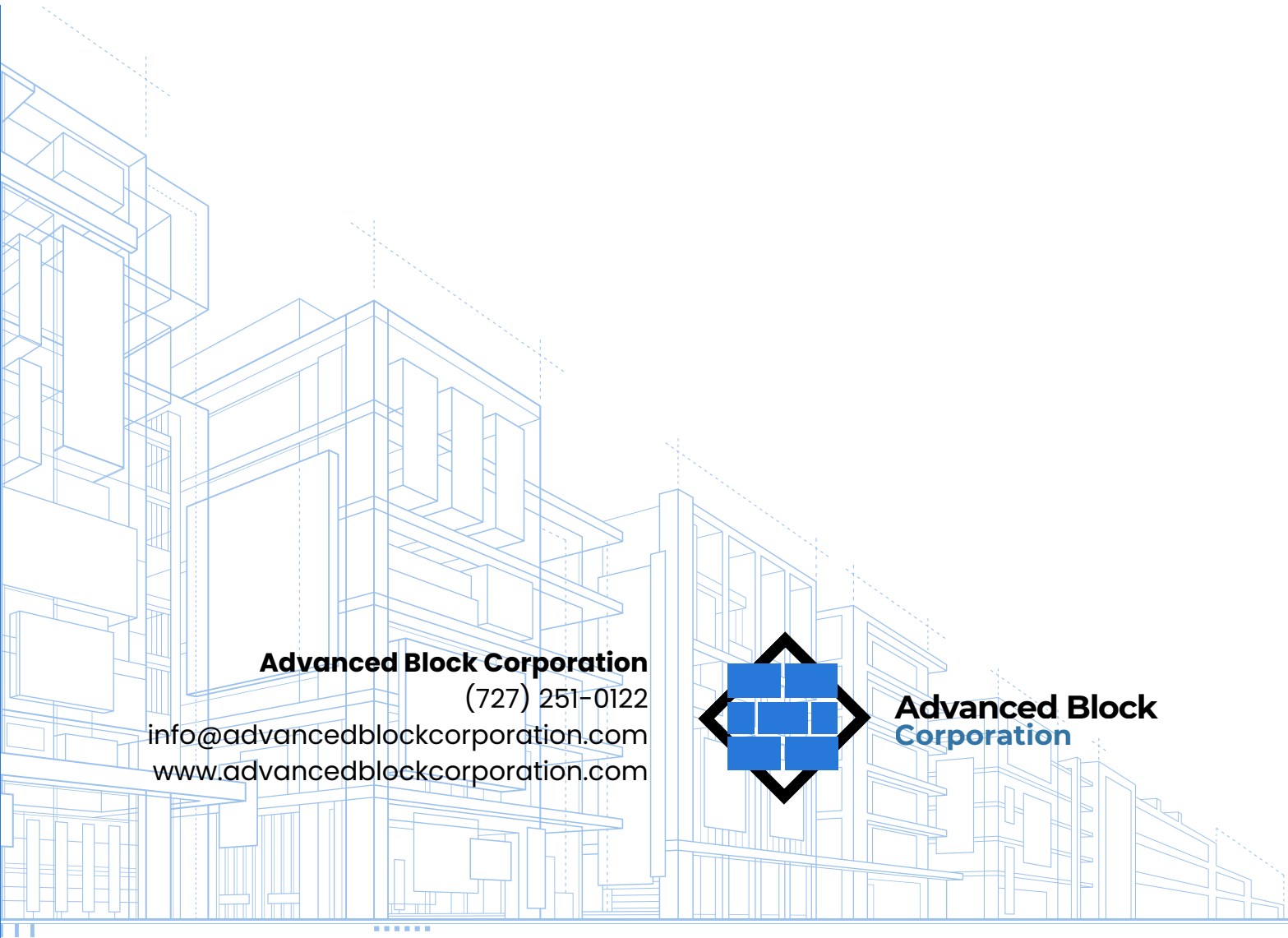
(727) 251-0122



info@advancedblockcorporation.com



www.advancedblockcorporation.com

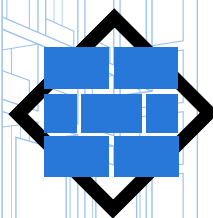


Advanced Block Corporation

(727) 251-0122

info@advancedblockcorporation.com

www.advancedblockcorporation.com



**Advanced Block
Corporation**